

LINX MESHES



Description: MONOFILAMENT
POLYPROPYLENE LIGHT MESH

A light monofilament polypropylene mesh which offers an excellent biocompatibility. extreme dimensional stability. Soft, thin and pliable. Non-Absorbable.

Color: Undyed

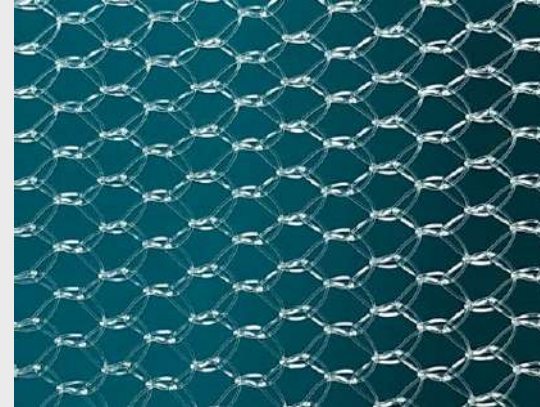
Range: In a variety of square, rectangle, key hole, preshaped and hole/tale. Divided in 2 groups of super light and light.
6x11, 7.6x15, 6x14, 6x12.5, 4.5x10, 10x10, 10x15, 15x15, 20x20, 25x25, 30x30
Pore size= 1.9mm-1.8mm, 1.25mm-1.25mm, 1mm-1.1mm, 0.72mm-1.62mm
1.85mm-1.18mm, 2.5mm-1.5mm
Average density=55+/-5
Linear tensile strength >9 Kgf
Burst strength > 10 Kgf



Indications: X-MESH is a Non-Absorbable mesh used to span and reinforce traumatic or surgical wounds to provide extended support during and following wound healing. This mesh elicits minimum inflammatory reaction, which is transient and is followed by the deposition of a thin fibrous layer of tissue which can grow through the interstices of the mesh, thus incorporating the mesh into the adjacent tissue. LINX MESH may be used for the repair of hernia, utero-vaginal prolapse and other fascial deficiencies that require the addition of a reinforcing or bridging material to obtain the desired surgical result.

Technical Specification of Mesh Type: 1 Super Light

Knitting Structures

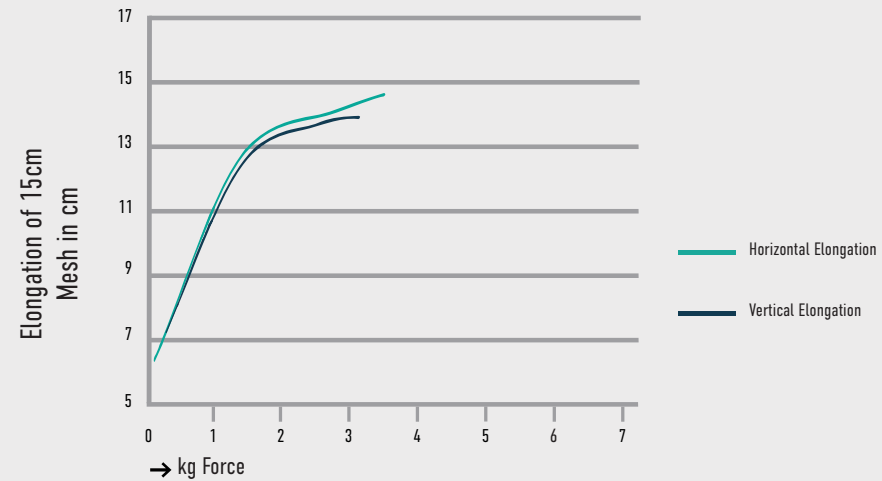


PICTURE NOT TO SCALE

Product	: Monofilament Polypropylene
Type	: 1 Super Light
Cutting Type	: LASER
Sterilization Type	: Ethylene Oxide (EO)
Sterility	: Sterile / Non Sterile
Colour	: Clear - Undyed

Specification	: Actual	Tolerance
Filament Diameter	: 0.100mm	+/- 10%
Thickness	: 0.39mm	+/- 10%
Weight	: 27 GSM	+/- 10%
Burst Strength	: Not less than	6 kg/cm ²
Pore Size		
Horizontal	: 1.90mm	+/- 10%
Vertical	: 1.80mm	+/- 10%

Elongation Chart



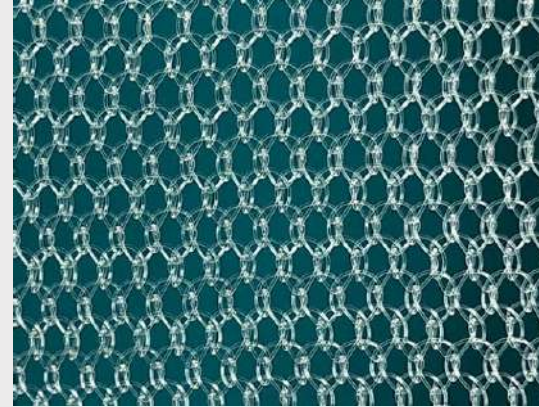
Super Light 1

CODE	TYPE CODE	TYPE	LENGTH	WIDTH	FILAMENT DIA	THICKNESS mm	WEIGHT	BURST STRENGTH	PORE SIZE "H"	PORE SIZE "V"	COLOR
L1SL6X11U27R	Rectangle	Super Light	11 cm	6 cm	0.1 mm	0.39 mm	27 GSM	6 Kg/cm ² NLT	1.9 mm	1.8 mm	Undyed
L1SL7.6X15U27R	Rectangle	Super Light	15 cm	7.6 cm	0.1 mm	0.39 mm	27 GSM	6 Kg/cm ² NLT	1.9 mm	1.8 mm	Undyed
L1SL7.6X11U27R	Rectangle	Super Light	11 cm	7.6 cm	0.1 mm	0.39 mm	27 GSM	6 Kg/cm ² NLT	1.9 mm	1.8 mm	Undyed
L1SL10X15U27R	Rectangle	Super Light	15 cm	10 cm	0.1 mm	0.39 mm	27 GSM	6 Kg/cm ² NLT	1.9 mm	1.8 mm	Undyed
L1SL10X10U27S	Square	Super Light	10 cm	10 cm	0.1 mm	0.39 mm	27 GSM	6 Kg/cm ² NLT	1.9 mm	1.8 mm	Undyed
L1SL15X15U27S	Square	Super Light	15 cm	15 cm	0.1 mm	0.39 mm	27 GSM	6 Kg/cm ² NLT	1.9 mm	1.8 mm	Undyed
L1SL20X20U27S	Square	Super Light	20 cm	20 cm	0.1 mm	0.39 mm	27 GSM	6 Kg/cm ² NLT	1.9 mm	1.8 mm	Undyed
L1SL25X25U27S	Square	Super Light	25 cm	25 cm	0.1 mm	0.39 mm	27 GSM	6 Kg/cm ² NLT	1.9 mm	1.8 mm	Undyed
L1SL30X30U27S	Square	Super Light	30 cm	30 cm	0.1 mm	0.39 mm	27 GSM	6 Kg/cm ² NLT	1.9 mm	1.8 mm	Undyed

Note: Any custom shapes and sizes available upon request.

Technical Specification of Mesh Type: 2 Super Light

Knitting Structures

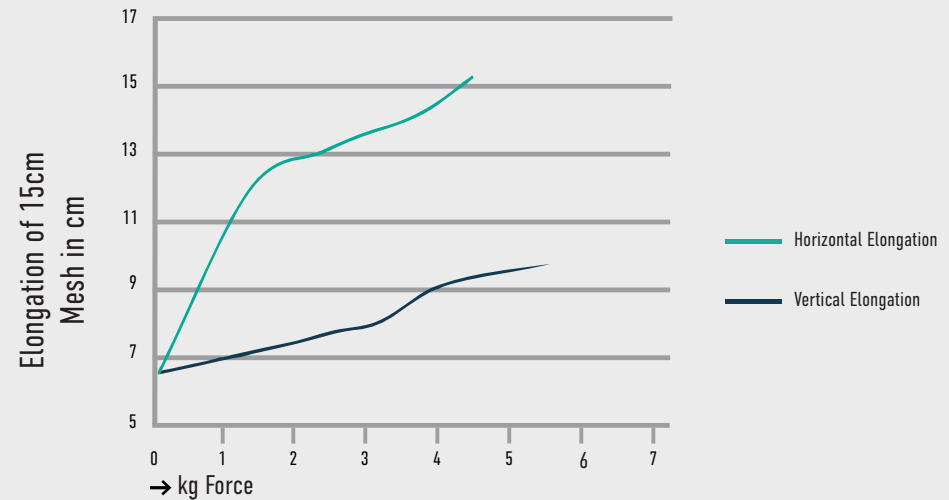


PICTURE NOT TO SCALE

Product	: Monofilament Polypropylene
Type	: 2 Super Light
Cutting Type	: LASER
Sterilization Type	: Ethylene Oxide (EO)
Sterility	: Sterile / Non Sterile
Colour	: Clear - Undyed

Specification	: Actual	Tolerance
Filament Diameter	: 0.100mm	+/- 10%
Thickness	: 0.46mm	+/- 10%
Weight	: 40 GSM	+/- 10%
Burst Strength	: Not less than	6 kg/cm ²
Pore Size		
Horizontal	: 1.25mm	+/- 10%
Vertical	: 1.25mm	+/- 10%

Elongation Chart



Super Light 2

CODE	TYPE CODE	TYPE	LENGTH	WIDTH	FILAMENT DIA	THICKNESS mm	WEIGHT	BURST STRENGTH	PORE SIZE "H"	PORE SIZE "V"	COLOR
L2SL3X10U36R	Rectangle	Super Light	10 cm	3 cm	0.1 mm	0.46 mm	36 GSM	6 Kg/cm ² NLT	1.25 mm	1.25 mm	Undyed
L2SL4.5X10U36R	Rectangle	Super Light	10 cm	4.5 cm	0.1 mm	0.46 mm	36 GSM	6 Kg/cm ² NLT	1.25 mm	1.25 mm	Undyed
L2SL5X10U36R	Rectangle	Super Light	10 cm	5 cm	0.1 mm	0.46 mm	36 GSM	6 Kg/cm ² NLT	1.25 mm	1.25 mm	Undyed
L2SL6X14U36R	Rectangle	Super Light	14 cm	6 cm	0.1 mm	0.46 mm	36 GSM	6 Kg/cm ² NLT	1.25 mm	1.25 mm	Undyed
L2SL6X35U36R	Rectangle	Super Light	35 cm	6 cm	0.1 mm	0.46 mm	36 GSM	6 Kg/cm ² NLT	1.25 mm	1.25 mm	Undyed
L2SL6X11U40R	Rectangle	Super Light	11 cm	6 cm	0.1 mm	0.46 mm	40 GSM	6 Kg/cm ² NLT	1.25 mm	1.25 mm	Undyed
L2SL7.6X15U36R	Rectangle	Super Light	15 cm	7.6 cm	0.1 mm	0.46 mm	36 GSM	6 Kg/cm ² NLT	1.25 mm	1.25 mm	Undyed
L2SL7.6X15U40R	Rectangle	Super Light	15 cm	7.6 cm	0.1 mm	0.46 mm	40 GSM	6 Kg/cm ² NLT	1.25 mm	1.25 mm	Undyed
L2SL7.6X11U40R	Rectangle	Super Light	11 cm	7.6 cm	0.1 mm	0.46 mm	40 GSM	6 Kg/cm ² NLT	1.25 mm	1.25 mm	Undyed
L2SL8X35U36R	Rectangle	Super Light	35 cm	8 cm	0.1 mm	0.46 mm	36 GSM	6 Kg/cm ² NLT	1.25 mm	1.25 mm	Undyed

Super Light 2

CODE	TYPE CODE	TYPE	LENGTH	WIDTH	FILAMENT DIA	THICKNESS mm	WEIGHT	BURST STRENGTH	PORE SIZE "H"	PORE SIZE "V"	COLOR
L2SL10X15U36R	Rectangle	Super Light	15 cm	10 cm	0.1 mm	0.46 mm	36 GSM	6 Kg/cm ² NLT	1.25 mm	1.25 mm	Undyed
L2SL10X35U36R	Rectangle	Super Light	35 cm	10 cm	0.1 mm	0.46 mm	36 GSM	6 Kg/cm ² NLT	1.25 mm	1.25 mm	Undyed
L2SL10X15U40R	Rectangle	Super Light	15 cm	10 cm	0.1 mm	0.46 mm	40 GSM	6 Kg/cm ² NLT	1.25 mm	1.25 mm	Undyed
L2SL15X20U36R	Rectangle	Super Light	20 cm	15 cm	0.1 mm	0.46 mm	36 GSM	6 Kg/cm ² NLT	1.25 mm	1.25 mm	Undyed
L2SL7.6X7.6U36S	Square	Super Light	7.6 cm	7.6 cm	0.1 mm	0.46 mm	36 GSM	6 Kg/cm ² NLT	1.25 mm	1.25 mm	Undyed
L2SL10X10U40S	Square	Super Light	10 cm	10 cm	0.1 mm	0.46 mm	40 GSM	6 Kg/cm ² NLT	1.25 mm	1.25 mm	Undyed
L2SL15X15U36S	Square	Super Light	15 cm	15 cm	0.1 mm	0.46 mm	36 GSM	6 Kg/cm ² NLT	1.25 mm	1.25 mm	Undyed
L2SL15X15U40S	Square	Super Light	15 cm	15 cm	0.1 mm	0.46 mm	40 GSM	6 Kg/cm ² NLT	1.25 mm	1.25 mm	Undyed
L2SL20X20U36S	Square	Super Light	20 cm	20 cm	0.1 mm	0.46 mm	36 GSM	6 Kg/cm ² NLT	1.25 mm	1.25 mm	Undyed
L2SL25X25U40S	Square	Super Light	25 cm	25 cm	0.1 mm	0.46 mm	40 GSM	6 Kg/cm ² NLT	1.25 mm	1.25 mm	Undyed

Super Light 2

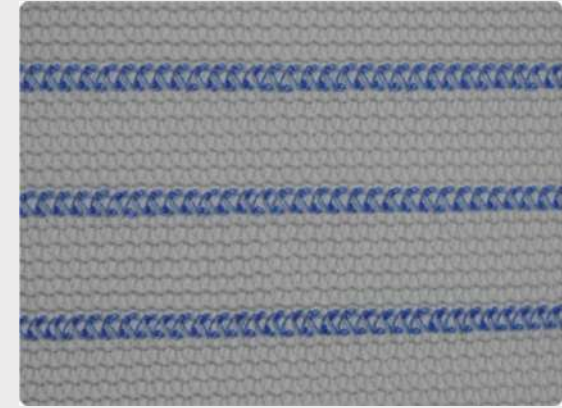
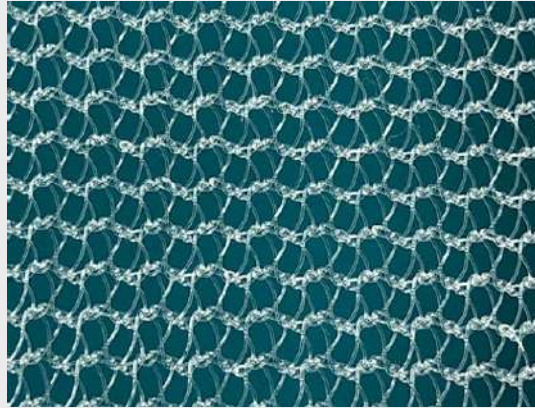
CODE	TYPE CODE	TYPE	LENGTH	WIDTH	FILAMENT DIA	THICKNESS mm	WEIGHT	BURST STRENGTH	PORE SIZE "H"	PORE SIZE "V"	COLOR
L2SL30X30U40S	Square	Super Light	30 cm	30 cm	0.1 mm	0.46 mm	40 GSM	6 Kg/cm ² NLT	1.25 mm	1.25 mm	Undyed
L2SL6X12.5U36K	Key Hole	Super Light	12.5 cm	6 cm	0.1 mm	0.46 mm	36 GSM	6 Kg/cm ² NLT	1.25 mm	1.25 mm	Undyed
L2SL4.5X10U36H	Hole / Tail	Super Light	10 cm	4.5 cm	0.1 mm	0.46 mm	36 GSM	6 Kg/cm ² NLT	1.25 mm	1.25 mm	Undyed
L2SL6X14U36H	Hole / Tail	Super Light	14 cm	6 cm	0.1 mm	0.46 mm	36 GSM	6 Kg/cm ² NLT	1.25 mm	1.25 mm	Undyed

Note : Any custom shapes and sizes available upon request.

Technical Specification of Mesh Type: 3 Super Light

Product	: Monofilament Polypropylene
Type	: 3 Super Light
Cutting Type	: LASER
Sterilization Type	: Ethylene Oxide (EO)
Sterility	: Sterile / Non Sterile
Colour	: Clear - Undyed

Knitting Structures

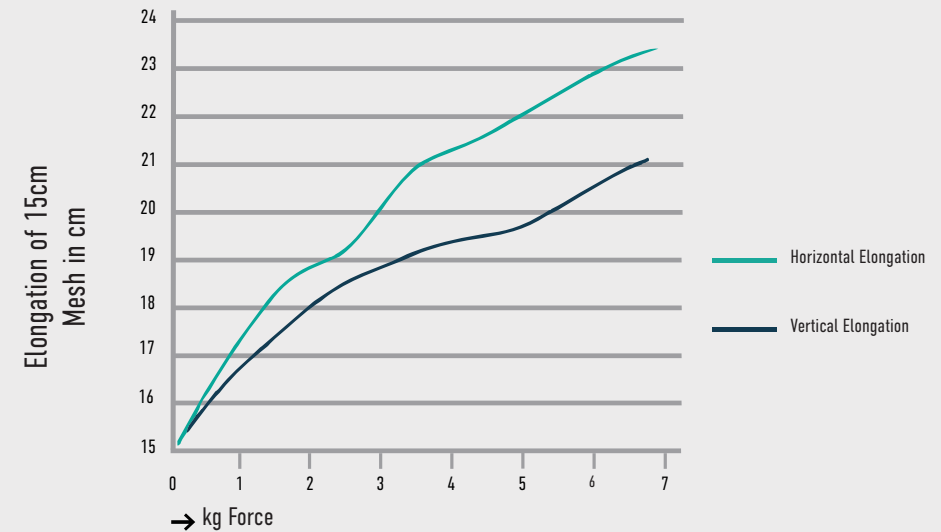


PICTURE NOT TO SCALE

PICTURE NOT TO SCALE

Specification	: Actual	Tolerance
Filament Diameter	: 0.100mm	+/- 10%
Thickness	: 0.35mm	+/- 10%
Weight	: 40 GSM	+/- 10%
Burst Strength	: Not less than	6 kg/cm ²
Pore Size		
Horizontal	: 1.00mm	+/- 10%
Vertical	: 1.10mm	+/- 10%

Elongation Chart



Super Light 3

CODE	TYPE CODE	TYPE	LENGTH	WIDTH	FILAMENT DIA	THICKNESS mm	WEIGHT	BURST STRENGTH	PORE SIZE "H"	PORE SIZE "V"	COLOR
L3SL5X10B40R	Rectangle	Super Light	10 cm	5 cm	0.1 mm	0.35 mm	40 GSM	6 Kg/cm ² NLT	1 mm	1.1 mm	Undyed with Blue Stripes
L3SL5X30B40R	Rectangle	Super Light	30 cm	5 cm	0.1 mm	0.35 mm	40 GSM	6 Kg/cm ² NLT	1 mm	1.1 mm	Undyed with Blue Stripes
L3SL6X11U40R	Rectangle	Super Light	11 cm	6 cm	0.1 mm	0.35 mm	40 GSM	6 Kg/cm ² NLT	1 mm	1.1 mm	Undyed
L3SL6X11B40R	Rectangle	Super Light	11 cm	6 cm	0.1 mm	0.35 mm	40 GSM	6 Kg/cm ² NLT	1 mm	1.1 mm	Undyed with Blue Stripes
L3SL7.6X15U40R	Rectangle	Super Light	15 cm	7.6 cm	0.1 mm	0.35 mm	40 GSM	6 Kg/cm ² NLT	1 mm	1.1 mm	Undyed
L3SL7.6X11U40R	Rectangle	Super Light	11 cm	7.6 cm	0.1 mm	0.35 mm	40 GSM	6 Kg/cm ² NLT	1 mm	1.1 mm	Undyed
L3SL7.6X15B40R	Rectangle	Super Light	15 cm	7.6 cm	0.1 mm	0.35 mm	40 GSM	6 Kg/cm ² NLT	1 mm	1.1 mm	Undyed with Blue Stripes
L3SL10X15U40R	Rectangle	Super Light	15 cm	10 cm	0.1 mm	0.35 mm	40 GSM	6 Kg/cm ² NLT	1 mm	1.1 mm	Undyed
L3SL10X15B40R	Rectangle	Super Light	15 cm	10 cm	0.1 mm	0.35 mm	40 GSM	6 Kg/cm ² NLT	1 mm	1.1 mm	Undyed with Blue Stripes
L3SL15X20B40R	Rectangle	Super Light	20 cm	15 cm	0.1 mm	0.35 mm	40 GSM	6 Kg/cm ² NLT	1 mm	1.1 mm	Undyed with Blue Stripes

Super Light 3

CODE	TYPE CODE	TYPE	LENGTH	WIDTH	FILAMENT DIA	THICKNESS mm	WEIGHT	BURST STRENGTH	PORE SIZE "H"	PORE SIZE "V"	COLOR
L3SL20X30B40R	Rectangle	Super Light	30 cm	20 cm	0.1 mm	0.35 mm	40 GSM	6 Kg/cm ² NLT	1 mm	1.1 mm	Undyed with Blue Stripes
L3SL26X36B40R	Rectangle	Super Light	36 cm	26 cm	0.1 mm	0.35 mm	40 GSM	6 Kg/cm ² NLT	1 mm	1.1 mm	Undyed with Blue Stripes
L3SL30X50B40R	Rectangle	Super Light	50 cm	30 cm	0.1 mm	0.35 mm	40 GSM	6 Kg/cm ² NLT	1 mm	1.1 mm	Undyed with Blue Stripes
L3SL7.6X7.6B40S	Square	Super Light	7.6 cm	7.6 cm	0.1 mm	0.35 mm	40 GSM	6 Kg/cm ² NLT	1 mm	1.1 mm	Undyed with Blue Stripes
L3SL10X10U40S	Square	Super Light	10 cm	10 cm	0.1 mm	0.35 mm	40 GSM	6 Kg/cm ² NLT	1 mm	1.1 mm	Undyed
L3SL10X10B40S	Square	Super Light	10 cm	10 cm	0.1 mm	0.35 mm	40 GSM	6 Kg/cm ² NLT	1 mm	1.1 mm	Undyed with Blue Stripes
L3SL15X15U40S	Square	Super Light	15 cm	15 cm	0.1 mm	0.35 mm	40 GSM	6 Kg/cm ² NLT	1 mm	1.1 mm	Undyed
L3SL15X15B40S	Square	Super Light	15 cm	15 cm	0.1 mm	0.35 mm	40 GSM	6 Kg/cm ² NLT	1 mm	1.1 mm	Undyed with Blue Stripes
L3SL20X20U40S	Square	Super Light	20 cm	20 cm	0.1 mm	0.35 mm	40 GSM	6 Kg/cm ² NLT	1 mm	1.1 mm	Undyed
L3SL25X25U40S	Square	Super Light	25 cm	25 cm	0.1 mm	0.35 mm	40 GSM	6 Kg/cm ² NLT	1 mm	1.1 mm	Undyed



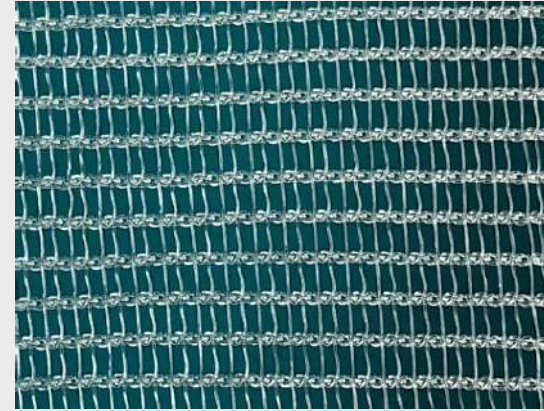
Super Light 3

CODE	TYPE CODE	TYPE	LENGTH	WIDTH	FILAMENT DIA	THICKNESS mm	WEIGHT	BURST STRENGTH	PORE SIZE "H"	PORE SIZE "V"	COLOR
L3SL30X30U40S	Square	Super Light	30 cm	30 cm	0.1 mm	0.35 mm	40 GSM	6 Kg/cm ² NLT	1 mm	1.1 mm	Undyed
L3SL30X30B40S	Square	Super Light	30 cm	30 cm	0.1 mm	0.35 mm	40 GSM	6 Kg/cm ² NLT	1 mm	1.1 mm	Undyed with Blue Stripes
L3SL4.5X10B40P	Preshaped	Super Light	10 cm	4.5 cm	0.1 mm	0.35 mm	40 GSM	6 Kg/cm ² NLT	1 mm	1.1 mm	Undyed with Blue Stripes
L3SL6X14B40P	Preshaped	Super Light	14 cm	6 cm	0.1 mm	0.35 mm	40 GSM	6 Kg/cm ² NLT	1 mm	1.1 mm	Undyed with Blue Stripes
L3SL4.5X9.5B40K	Key Hole	Super Light	9.5 cm	4.5 cm	0.1 mm	0.35 mm	40 GSM	6 Kg/cm ² NLT	1 mm	1.1 mm	Undyed with Blue Stripes
L3SL6X12.5B40K	Key Hole	Super Light	12.5 cm	6 cm	0.1 mm	0.35 mm	40 GSM	6 Kg/cm ² NLT	1 mm	1.1 mm	Undyed with Blue Stripes
L3SL4.5X10B40H	Hole / Tail	Super Light	10 cm	4.5 cm	0.1 mm	0.35 mm	40 GSM	6 Kg/cm ² NLT	1 mm	1.1 mm	Undyed with Blue Stripes
L3SL6X14B40H	Hole / Tail	Super Light	14 cm	6 cm	0.1 mm	0.35 mm	40 GSM	6 Kg/cm ² NLT	1 mm	1.1 mm	Undyed with Blue Stripes

Note : Any custom shapes and sizes available upon request.

Technical Specification of Mesh Type: 4 Super Light

Knitting Structures

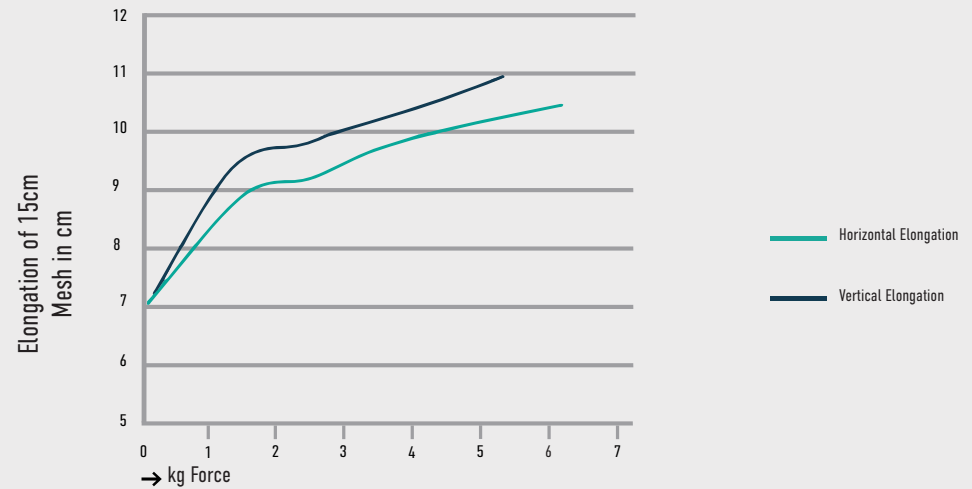


PICTURE NOT TO SCALE

Product	: Monofilament Polypropylene
Type	: 4 Super Light
Cutting Type	: LASER
Sterilization Type	: Ethylene Oxide (EO)
Sterility	: Sterile / Non Sterile
Colour	: Clear - Undyed

Specification	: Actual	Tolerance
Filament Diameter	: 0.100mm	+/- 10%
Thickness	: 0.42mm	+/- 10%
Weight	: 40 GSM	+/- 10%
Burst Strength	: Not less than	6 kg/cm ²
Pore Size		
Horizontal	: 0.72mm	+/- 10%
Vertical	: 1.62mm	+/- 10%

Elongation Chart



Super Light 4

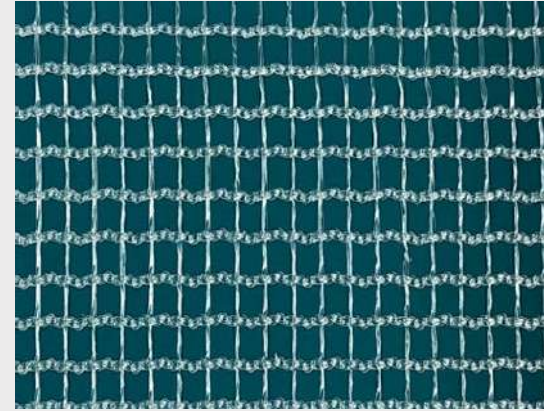
CODE	TYPE CODE	TYPE	LENGTH	WIDTH	FILAMENT DIA	THICKNESS mm	WEIGHT	BURST STRENGTH	PORE SIZE "H"	PORE SIZE "V"	COLOR
L4SL6X11U40R	Rectangle	Super Light	11 cm	6 cm	0.1 mm	0.42 mm	40 GSM	6 Kg/cm ² NLT	0.72 mm	1.62 mm	Undyed
L4SL7.6X15U40R	Rectangle	Super Light	15 cm	7.6 cm	0.1 mm	0.42 mm	40 GSM	6 Kg/cm ² NLT	0.72 mm	1.62 mm	Undyed
L4SL7.6X11U40R	Rectangle	Super Light	11 cm	7.6 cm	0.1 mm	0.42 mm	40 GSM	6 Kg/cm ² NLT	0.72 mm	1.62 mm	Undyed
L4SL10X15U40R	Rectangle	Super Light	15 cm	10 cm	0.1 mm	0.42 mm	40 GSM	6 Kg/cm ² NLT	0.72 mm	1.62 mm	Undyed
L4SL10X10U40S	Square	Super Light	10 cm	10 cm	0.1 mm	0.42 mm	40 GSM	6 Kg/cm ² NLT	0.72 mm	1.62 mm	Undyed
L4SL15X15U40S	Square	Super Light	15 cm	15 cm	0.1 mm	0.42 mm	40 GSM	6 Kg/cm ² NLT	0.72 mm	1.62 mm	Undyed
L4SL20X20U40S	Square	Super Light	20 cm	20 cm	0.1 mm	0.42 mm	40 GSM	6 Kg/cm ² NLT	0.72 mm	1.62 mm	Undyed
L4SL25X25U40S	Square	Super Light	25 cm	25 cm	0.1 mm	0.42 mm	40 GSM	6 Kg/cm ² NLT	0.72 mm	1.62 mm	Undyed
L4SL30X30U40S	Square	Super Light	30 cm	30 cm	0.1 mm	0.42 mm	40 GSM	6 Kg/cm ² NLT	0.72 mm	1.62 mm	Undyed

Note : Any custom shapes and sizes available upon request.

Technical Specification of Mesh Type: 5 Super Light

Product	: Monofilament Polypropylene
Type	: 5 Super Light
Cutting Type	: LASER
Sterilization Type	: Ethylene Oxide (EO)
Sterility	: Sterile / Non Sterile
Colour	: Clear - Undyed

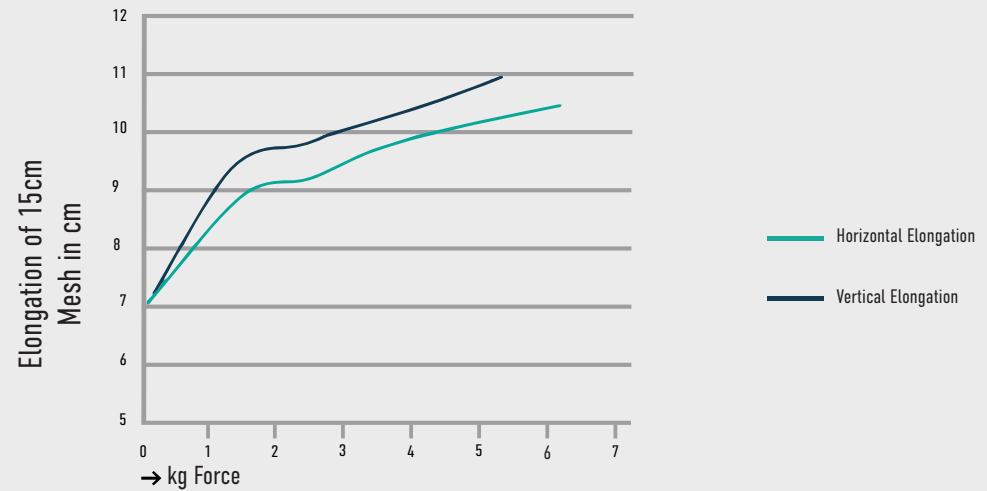
Knitting Structures



PICTURE NOT TO SCALE

Specification	: Actual	Tolerance
Filament Diameter	: 0.150mm	+/- 10%
Thickness	: 0.46mm	+/- 10%
Weight	: 48 GSM	+/- 10%
Burst Strength	: Not less than	6.0 kg/cm ²
Pore Size		
Horizontal	: 1.85mm	+/- 10%
Vertical	: 1.18mm	+/- 10%

Elongation Chart



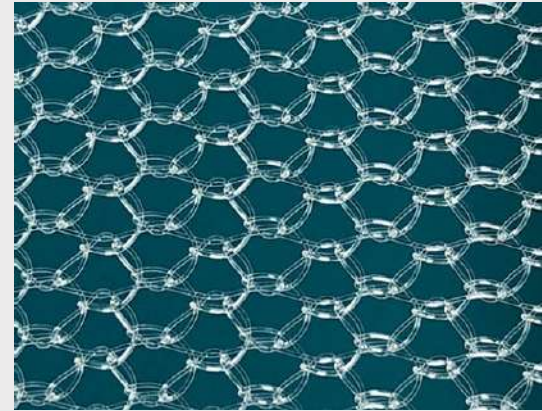
Super Light 5

CODE	TYPE CODE	TYPE	LENGTH	WIDTH	FILAMENT DIA	THICKNESS mm	WEIGHT	BURST STRENGTH	PORE SIZE "H"	PORE SIZE "V"	COLOR
L5SL6X11U48R	Rectangle	Super Light	11 cm	6 cm	0.15 mm	0.46 mm	48 GSM	6 Kg/cm ² NLT	1.85 mm	1.18 mm	Undyed
L5SL7.6X15U48R	Rectangle	Super Light	15 cm	7.6 cm	0.15 mm	0.46 mm	48 GSM	6 Kg/cm ² NLT	1.85 mm	1.18 mm	Undyed
L5SL7.6X11U48R	Rectangle	Super Light	11 cm	7.6 cm	0.15 mm	0.46 mm	48 GSM	6 Kg/cm ² NLT	1.85 mm	1.18 mm	Undyed
L5SL10X15U48R	Rectangle	Super Light	15 cm	10 cm	0.15 mm	0.46 mm	48 GSM	6 Kg/cm ² NLT	1.85 mm	1.18 mm	Undyed
L5SL10X10U48S	Square	Super Light	10 cm	10 cm	0.15 mm	0.46 mm	48 GSM	6 Kg/cm ² NLT	1.85 mm	1.18 mm	Undyed
L5SL15X15U48S	Square	Super Light	15 cm	15 cm	0.15 mm	0.46 mm	48 GSM	6 Kg/cm ² NLT	1.85 mm	1.18 mm	Undyed
L5SL20X20U48S	Square	Super Light	20 cm	20 cm	0.15 mm	0.46 mm	48 GSM	6 Kg/cm ² NLT	1.85 mm	1.18 mm	Undyed
L5SL25X25U48S	Square	Super Light	25 cm	25 cm	0.15 mm	0.46 mm	48 GSM	6 Kg/cm ² NLT	1.85 mm	1.18 mm	Undyed
L5SL30X30U48S	Square	Super Light	30 cm	30 cm	0.15 mm	0.46 mm	48 GSM	6 Kg/cm ² NLT	1.85 mm	1.18 mm	Undyed

Note : Any custom shapes and sizes available upon request.

Technical Specification of Mesh Type: 6 Super Light

Knitting Structures

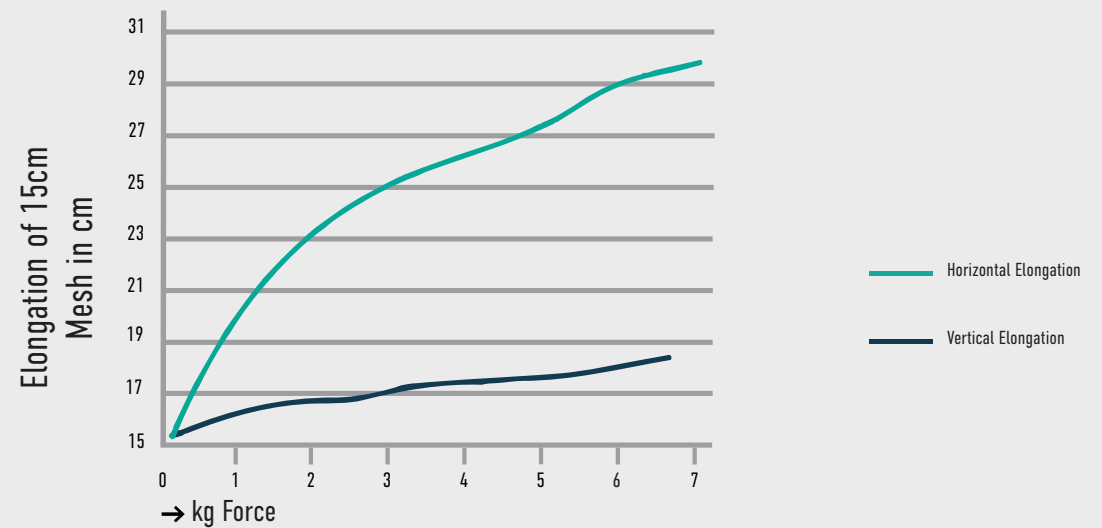


PICTURE NOT TO SCALE

Product	: Monofilament Polypropylene
Type	: 6 Super Light
Cutting Type	: LASER
Sterilization Type	: Ethylene Oxide (EO)
Sterility	: Sterile / Non Sterile
Colour	: Clear - Undyed

Specification	: Actual	Tolerance
Filament Diameter	: 0.150mm	+/- 10%
Thickness	: 0.55mm	+/- 10%
Weight	: 55 GSM	+/- 10%
Burst Strength	: Not less than	7.0 kg/cm ²
Pore Size		
Horizontal	: 2.50mm	+/- 10%
Vertical	: 1.50mm	+/- 10%

Elongation Chart



Super Light 6

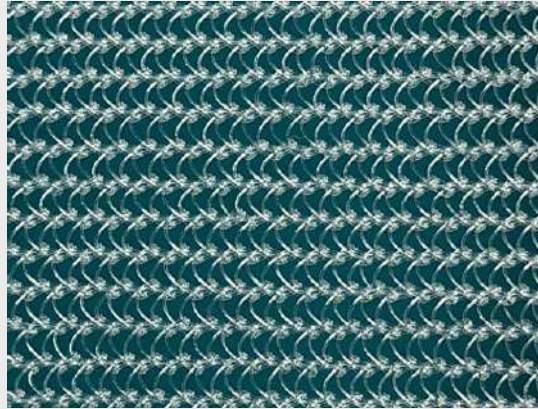
CODE	TYPE CODE	TYPE	LENGTH	WIDTH	FILAMENT DIA	THICKNESS mm	WEIGHT	BURST STRENGTH	PORE SIZE "H"	PORE SIZE "V"	COLOR
L6SL6X11U55R	Rectangle	Super Light	11 cm	6 cm	0.15 mm	0.55 mm	55 GSM	7 Kg/cm ² NLT	2.5 mm	1.5 mm	Undyed
L6SL7.6X15U55R	Rectangle	Super Light	15 cm	7.6 cm	0.15 mm	0.55 mm	55 GSM	7 Kg/cm ² NLT	2.5 mm	1.5 mm	Undyed
L6SL7.6X11U55R	Rectangle	Super Light	11 cm	7.6 cm	0.15 mm	0.55 mm	55 GSM	7 Kg/cm ² NLT	2.5 mm	1.5 mm	Undyed
L6SL10X15U55R	Rectangle	Super Light	15 cm	10 cm	0.15 mm	0.55 mm	55 GSM	7 Kg/cm ² NLT	2.5 mm	1.5 mm	Undyed
L6SL10X10U55S	Square	Super Light	10 cm	10 cm	0.15 mm	0.55 mm	55 GSM	7 Kg/cm ² NLT	2.5 mm	1.5 mm	Undyed
L6SL15X15U55S	Square	Super Light	15 cm	15 cm	0.15 mm	0.55 mm	55 GSM	7 Kg/cm ² NLT	2.5 mm	1.5 mm	Undyed
L6SL20X20U55S	Square	Super Light	20 cm	20 cm	0.15 mm	0.55 mm	55 GSM	7 Kg/cm ² NLT	2.5 mm	1.5 mm	Undyed
L6SL25X25U55S	Square	Super Light	25 cm	25 cm	0.15 mm	0.55 mm	55 GSM	7 Kg/cm ² NLT	2.5 mm	1.5 mm	Undyed
L6SL30X30U55S	Square	Super Light	30 cm	30 cm	0.15 mm	0.55 mm	55 GSM	7 Kg/cm ² NLT	2.5 mm	1.5 mm	Undyed

Note : Any custom shapes and sizes available upon request.

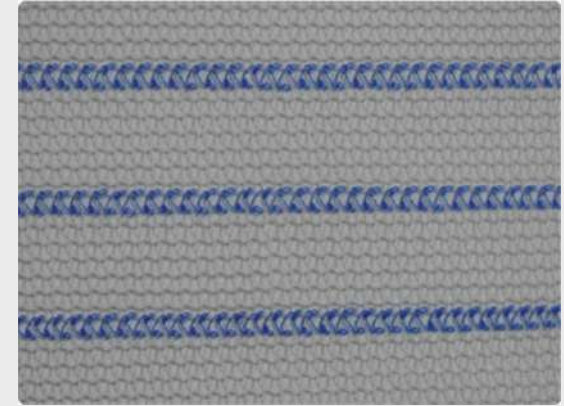
Technical Specification of Mesh Type: 7 Light

Product	: Monofilament Polypropylene
Type	: 7 Light
Cutting Type	: LASER
Sterilization Type	: Ethylene Oxide (EO)
Sterility	: Sterile / Non Sterile
Colour	: Clear - Undyed

Knitting Structures



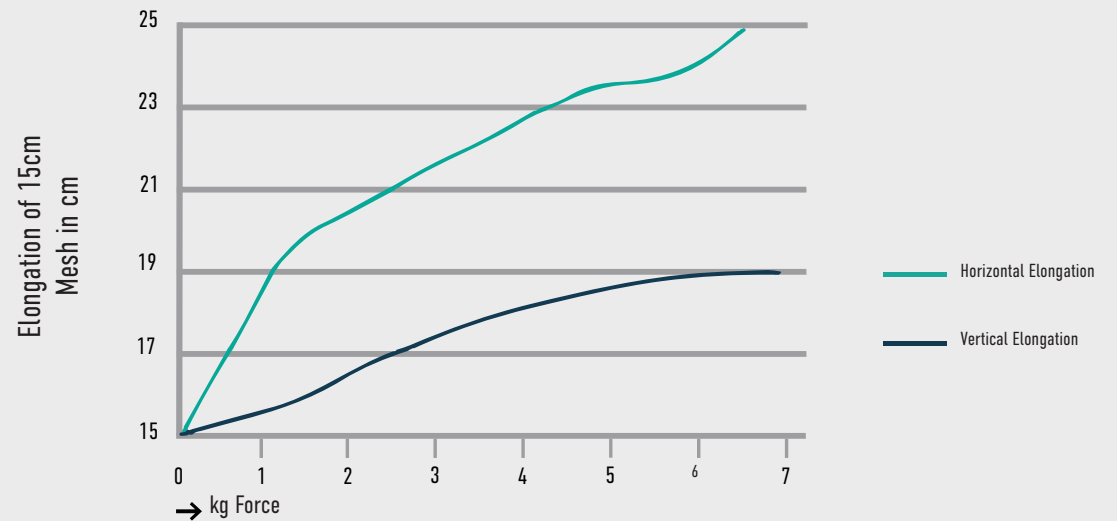
PICTURE NOT TO SCALE



PICTURE NOT TO SCALE

Specification	: Actual	Tolerance
Filament Diameter	: 0.100mm	+/- 10%
Thickness	: 0.45mm	+/- 10%
Weight	: 65 GSM	+/- 10%
Burst Strength	: Not less than	6 kg/cm ²
Pore Size		
Horizontal	: 1.00mm	+/- 10%
Vertical	: 0.75mm	+/- 10%

Elongation Chart



Super Light 7

CODE	TYPE CODE	TYPE	LENGTH	WIDTH	FILAMENT DIA	THICKNESS mm	WEIGHT	BURST STRENGTH	PORE SIZE "H"	PORE SIZE "V"	COLOR
L7LI5X10B60R	Rectangle	Light	10 cm	5 cm	0.1 mm	0.45 mm	60 GSM	6 Kg/cm ² NLT	1.1 mm	0.75 mm	Undyed with Blue Stripes
L7LI5X30B60R	Rectangle	Light	30 cm	5 cm	0.1 mm	0.45 mm	60 GSM	6 Kg/cm ² NLT	1.1 mm	0.75 mm	Undyed with Blue Stripes
L7LI6X11U65R	Rectangle	Light	11 cm	6 cm	0.1 mm	0.45 mm	65 GSM	6 Kg/cm ² NLT	1 mm	0.75 mm	Undyed
L7LI6X11B65R	Rectangle	Light	11 cm	6 cm	0.1 mm	0.45 mm	65 GSM	5 Kg/cm ² NLT	1 mm	0.75 mm	Undyed with Blue Stripes
L7LI7.6X15B60R	Rectangle	Light	15 cm	7.6 cm	0.1 mm	0.45 mm	60 GSM	6 Kg/cm ² NLT	1.1 mm	0.75 mm	Undyed with Blue Stripes
L7LI7.6X15U65R	Rectangle	Light	15 cm	7.6 cm	0.1 mm	0.45 mm	65 GSM	6 Kg/cm ² NLT	1 mm	0.75 mm	Undyed
L7LI7.6X11U65R	Rectangle	Light	11 cm	7.6 cm	0.1 mm	0.45 mm	65 GSM	6 Kg/cm ² NLT	1 mm	0.75 mm	Undyed
L7LI7.6X15B65R	Rectangle	Light	15 cm	7.6 cm	0.1 mm	0.45 mm	65 GSM	5 Kg/cm ² NLT	1 mm	0.75 mm	Undyed with Blue Stripes
L7LI10X15B60R	Rectangle	Light	15 cm	10 cm	0.1 mm	0.45 mm	60 GSM	6 Kg/cm ² NLT	1.1 mm	0.75 mm	Undyed with Blue Stripes
L7LI10X15U65R	Rectangle	Light	15 cm	10 cm	0.1 mm	0.45 mm	65 GSM	6 Kg/cm ² NLT	1 mm	0.75 mm	Undyed

Super Light 7

CODE	TYPE CODE	TYPE	LENGTH	WIDTH	FILAMENT DIA	THICKNESS mm	WEIGHT	BURST STRENGTH	PORE SIZE "H"	PORE SIZE "V"	COLOR
L7LI10X15B65R	Rectangle	Light	15 cm	10 cm	0.1 mm	0.45 mm	65 GSM	5 Kg/cm ² NLT	1 mm	0.75 mm	Undyed with Blue Stripes
L7LI15X20B60R	Rectangle	Light	20 cm	15 cm	0.1 mm	0.45 mm	60 GSM	6 Kg/cm ² NLT	1.1 mm	0.75 mm	Undyed with Blue Stripes
L7LI20X30B60R	Rectangle	Light	30 cm	20 cm	0.1 mm	0.45 mm	60 GSM	6 Kg/cm ² NLT	1.1 mm	0.75 mm	Undyed with Blue Stripes
L7LI26X36B60R	Rectangle	Light	36 cm	26 cm	0.1 mm	0.45 mm	60 GSM	6 Kg/cm ² NLT	1.1 mm	0.75 mm	Undyed with Blue Stripes
L7LI30X50B60R	Rectangle	Light	50 cm	30 cm	0.1 mm	0.45 mm	60 GSM	6 Kg/cm ² NLT	1.1 mm	0.75 mm	Undyed with Blue Stripes
L7LI7.6X7.6B60S	Square	Light	7.6 cm	7.6 cm	0.1 mm	0.45 mm	60 GSM	6 Kg/cm ² NLT	1.1 mm	0.75 mm	Undyed with Blue Stripes
L7LI10X10U65S	Square	Light	10 cm	10 cm	0.1 mm	0.45 mm	65 GSM	6 Kg/cm ² NLT	1 mm	0.75 mm	Undyed
L7LI10X10B65S	Square	Light	10 cm	10 cm	0.1 mm	0.45 mm	65 GSM	5 Kg/cm ² NLT	1 mm	0.75 mm	Undyed with Blue Stripes
L7LI15X15B60S	Square	Light	15 cm	15 cm	0.1 mm	0.45 mm	60 GSM	6 Kg/cm ² NLT	1.1 mm	0.75 mm	Undyed with Blue Stripes
L7LI15X15U65S	Square	Light	15 cm	15 cm	0.1 mm	0.45 mm	65 GSM	6 Kg/cm ² NLT	1 mm	0.75 mm	Undyed



Super Light 7

CODE	TYPE CODE	TYPE	LENGTH	WIDTH	FILAMENT DIA	THICKNESS mm	WEIGHT	BURST STRENGTH	PORE SIZE "H"	PORE SIZE "V"	COLOR
L7LI15X15B65S	Square	Light	15 cm	15 cm	0.1 mm	0.45 mm	65 GSM	5 Kg/cm ² NLT	1 mm	0.75 mm	Undyed with Blue Stripes
L7LI20X20U65S	Square	Light	20 cm	20 cm	0.1 mm	0.45 mm	65 GSM	6 Kg/cm ² NLT	1 mm	0.75 mm	Undyed
L7LI25X25U65S	Square	Light	25 cm	25 cm	0.1 mm	0.45 mm	65 GSM	6 Kg/cm ² NLT	1 mm	0.75 mm	Undyed
L7LI30X30B60S	Square	Light	30 cm	30 cm	0.1 mm	0.45 mm	60 GSM	6 Kg/cm ² NLT	1.1 mm	0.75 mm	Undyed with Blue Stripes
L7LI30X30U65S	Square	Light	30 cm	30 cm	0.1 mm	0.45 mm	65 GSM	6 Kg/cm ² NLT	1 mm	0.75 mm	Undyed
L7LI30X30B65S	Square	Light	30 cm	30 cm	0.1 mm	0.45 mm	65 GSM	5 Kg/cm ² NLT	1 mm	0.75 mm	Undyed with Blue Stripes
L7LI4.5X10B60P	Preshaped	Light	10 cm	4.5 cm	0.1 mm	0.45 mm	60 GSM	6 Kg/cm ² NLT	1.1 mm	0.75 mm	Undyed with Blue Stripes
L7LI6X14B60P	Preshaped	Light	14 cm	6 cm	0.1 mm	0.55 mm	60 GSM	6 Kg/cm ² NLT	1.1 mm	0.75 mm	Undyed with Blue Stripes
L7LI4.5X9.5B60K	Key Hole	Light	9.5 cm	4.5 cm	0.1 mm	0.45 mm	60 GSM	6 Kg/cm ² NLT	1.1 mm	0.75 mm	Undyed with Blue Stripes
L7LI6X12.5B60K	Key Hole	Light	12.5 cm	6 cm	0.1 mm	0.45 mm	60 GSM	6 Kg/cm ² NLT	1.1 mm	0.75 mm	Undyed with Blue Stripes

Super Light 7

CODE	TYPE CODE	TYPE	LENGTH	WIDTH	FILAMENT DIA	THICKNESS mm	WEIGHT	BURST STRENGTH	PORE SIZE "H"	PORE SIZE "V"	COLOR
L7L14.5X10B60H	Hole / Tail	Light	10 cm	4.5 cm	0.1 mm	0.45 mm	60 GSM	6 Kg/cm ² NLT	1.1 mm	0.75 mm	Undyed with Blue Stripes
L7L16X14B60H	Hole / Tail	Light	14 cm	6 cm	0.1 mm	0.45 mm	60 GSM	6 Kg/cm ² NLT	1.1 mm	0.75 mm	Undyed with Blue Stripes

Note : Any custom shapes and sizes available upon request.

Description: MONOFILAMENT
POLYPROPYLENE REGULAR MESH

Constructed of knitted filaments of extruded Polypropylene, a synthetic linear poly-olefin (C3H6) n. For hernia repair or for reconstruction of the chest wall.
Non-Absorbable

Color: Undyed

Range: In a variety of square, rectangle, key hole, preshaped and hole/tale. Divided to 3 groups of regular, heavy and super heavy.
6x11, 7.6x15, 6x14, 6x12.5, 4.5x10, 10x10, 10x15, 15x15, 20x20, 25x25, 30x30
Pore size= 1mm-0.75mm, 1.1mm-1.2mm, 1.1mm-1.5mm
Linear tensile strength >9 Kgf
Burst strength > 6 kg, 8 kg, 9.5 kg, 10 kg

Indications: X-MESH is a Non-Absorbable mesh used to span and reinforce traumatic or surgical wounds to provide extended support during and following wound healing. This mesh elicits minimum inflammatory reaction, which is transient and is followed by the deposition of a thin fibrous layer of tissue which can grow through the interstices of the mesh, thus incorporating the mesh into the adjacent tissue.
LINX MESH may be used for the repair of hernia, utero-vaginal prolapse and other fascial deficiencies that require the addition of a reinforcing or bridging material to obtain the desired surgical result.

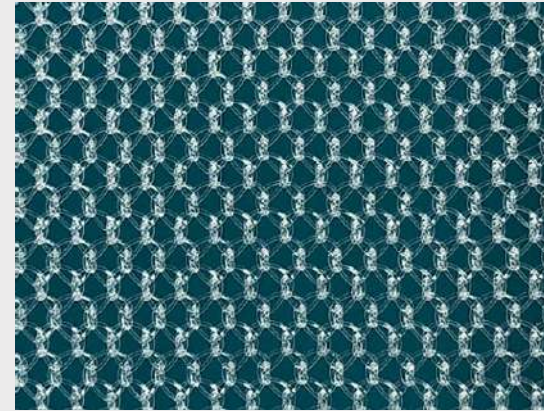


**X-MESH
REGULAR**

Technical Specification of Mesh Type: 8 Regular

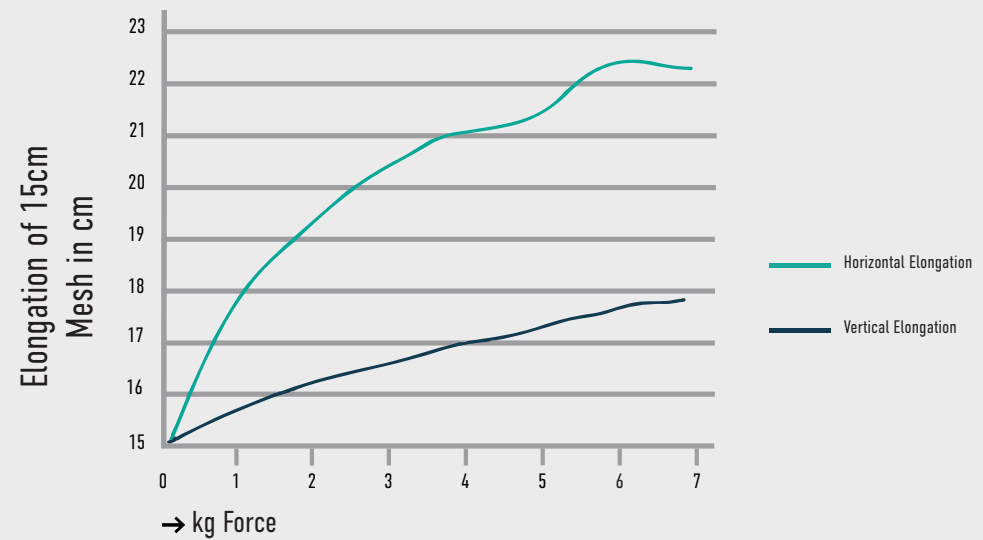
Product	: Monofilament Polypropylene	
Type	: 8 Regular	
Cutting Type	: LASER	
Sterilization Type	: Ethylene Oxide (EO)	
Sterility	: Sterile / Non Sterile	
Colour	: Clear - Undyed	
Specification	: Actual	Tolerance
Filament Diameter	: 0.150mm	+/- 10%
Thickness	: 0.55mm	+/- 10%
Weight	: 85 GSM	+/- 10%
Burst Strength	: Not less than	8 kg/cm ²
Pore Size		
Horizontal	: 1.10mm	+/- 10%
Vertical	: 1.20mm	+/- 10%

Knitting Structures



PICTURE NOT TO SCALE

Elongation Chart



Regular 8

CODE	TYPE CODE	TYPE	LENGTH	WIDTH	FILAMENT DIA	THICKNESS mm	WEIGHT	BURST STRENGTH	PORE SIZE "H"	PORE SIZE "V"	COLOR
L8RE3X10U82R	Rectangle	Regular	10 cm	3 cm	0.15 mm	0.55 mm	82 GSM	8 Kg/cm ² NLT	1.1 mm	1.2 mm	Undyed
L8RE5X10U82R	Rectangle	Regular	10 cm	5 cm	0.15 mm	0.55 mm	82 GSM	8 Kg/cm ² NLT	1.1 mm	1.2 mm	Undyed
L8RE5X30U82R	Rectangle	Regular	30 cm	5 cm	0.15 mm	0.55 mm	82 GSM	8 Kg/cm ² NLT	1.1 mm	1.2 mm	Undyed
L8RE6X11U85R	Rectangle	Regular	11 cm	6 cm	0.15 mm	0.55 mm	85 GSM	8 Kg/cm ² NLT	1.1 mm	1.2 mm	Undyed
L8RE7.5X15U82R	Rectangle	Regular	15 cm	7.5 cm	0.15 mm	0.55 mm	82 GSM	8 Kg/cm ² NLT	1.1 mm	1.2 mm	Undyed
L8RE7.6X11U82R	Rectangle	Regular	11 cm	7.6 cm	0.15 mm	0.55 mm	82 GSM	8 Kg/cm ² NLT	1.1 mm	1.2 mm	Undyed
L8RE7.6X15U85R	Rectangle	Regular	15 cm	7.6 cm	0.15 mm	0.55 mm	85 GSM	8 Kg/cm ² NLT	1.1 mm	1.2 mm	Undyed
L8RE8X12U82R	Rectangle	Regular	12 cm	8 cm	0.15 mm	0.55 mm	82 GSM	8 Kg/cm ² NLT	1.1 mm	1.2 mm	Undyed
L8RE10X15U82R	Rectangle	Regular	15 cm	10 cm	0.15 mm	0.55 mm	82 GSM	8 Kg/cm ² NLT	1.1 mm	1.2 mm	Undyed
L8RE10X15U85R	Rectangle	Regular	15 cm	10 cm	0.15 mm	0.55 mm	85 GSM	8 Kg/cm ² NLT	1.1 mm	1.2 mm	Undyed

Regular 8

CODE	TYPE CODE	TYPE	LENGTH	WIDTH	FILAMENT DIA	THICKNESS mm	WEIGHT	BURST STRENGTH	PORE SIZE "H"	PORE SIZE "V"	COLOR
L8RE20X20U82S	Square	Regular	20 cm	20 cm	0.15 mm	0.55 mm	82 GSM	8 Kg/cm ² NLT	1.1 mm	1.2 mm	Undyed
L8RE25X25U82S	Square	Regular	25 cm	25 cm	0.15 mm	0.55 mm	82 GSM	8 Kg/cm ² NLT	1.1 mm	1.2 mm	Undyed
L8RE26X36U82R	Rectangle	Regular	36 cm	26 cm	0.15 mm	0.55 mm	82 GSM	8 Kg/cm ² NLT	1.1 mm	1.2 mm	Undyed
L8RE30X50U82R	Rectangle	Regular	50 cm	30 cm	0.15 mm	0.55 mm	82 GSM	8 Kg/cm ² NLT	1.1 mm	1.2 mm	Undyed
L8RE7.6X7.6U82S	Square	Regular	7.6 cm	7.6 cm	0.15 mm	0.55 mm	82 GSM	8 Kg/cm ² NLT	1.1 mm	1.2 mm	Undyed
L8RE10X10U85S	Square	Regular	10 cm	10 cm	0.15 mm	0.55 mm	85 GSM	8 Kg/cm ² NLT	1.1 mm	1.2 mm	Undyed
L8RE15X15U82S	Square	Regular	15 cm	15 cm	0.15 mm	0.55 mm	82 GSM	8 Kg/cm ² NLT	1.1 mm	1.2 mm	Undyed
L8RE15X15U85S	Square	Regular	15 cm	15 cm	0.15 mm	0.55 mm	85 GSM	8 Kg/cm ² NLT	1.1 mm	1.2 mm	Undyed
L8RE30X30U82S	Square	Regular	30 cm	30 cm	0.15 mm	0.55 mm	82 GSM	8 Kg/cm ² NLT	1.1 mm	1.2 mm	Undyed
L8RE30X30U85S	Square	Regular	30 cm	30 cm	0.15 mm	0.55 mm	85 GSM	8 Kg/cm ² NLT	1.1 mm	1.2 mm	Undyed

Regular 8

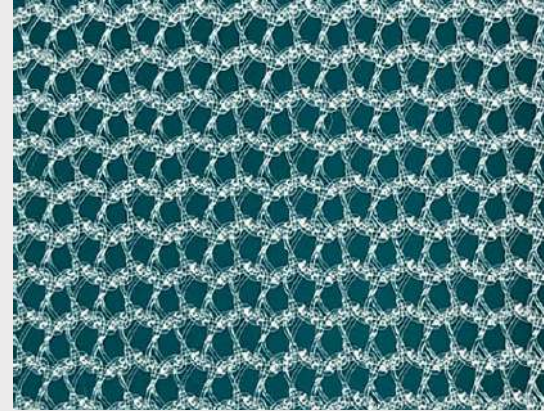
CODE	TYPE CODE	TYPE	LENGTH	WIDTH	FILAMENT DIA	THICKNESS mm	WEIGHT	BURST STRENGTH	PORE SIZE "H"	PORE SIZE "V"	COLOR
L8RE4.5X10U82P	Pre-Shaped	Regular	10 cm	4.5 cm	0.15 mm	0.55 mm	82 GSM	8 Kg/cm ² NLT	1.1 mm	1.2 mm	Undyed
L8RE6X14U82P	Pre-Shaped	Regular	14 cm	6 cm	0.15 mm	0.55 mm	82 GSM	8 Kg/cm ² NLT	1.1 mm	1.2 mm	Undyed
L8RE4.5X9.5U82K	Key Hole	Regular	9.5 cm	4.5 cm	0.15 mm	0.55 mm	82 GSM	8 Kg/cm ² NLT	1.1 mm	1.2 mm	Undyed
L8RE6X12.5U82K	Key Hole	Regular	12.5 cm	6 cm	0.15 mm	0.55 mm	82 GSM	8 Kg/cm ² NLT	1.1 mm	1.2 mm	Undyed
L8RE4.5X10U82H	Hole / Tail	Regular	10 cm	4.5 cm	0.15 mm	0.55 mm	82 GSM	8 Kg/cm ² NLT	1.1 mm	1.2 mm	Undyed
L8RE6X14U82H	Hole / Tail	Regular	14 cm	6 cm	0.15 mm	0.55 mm	82 GSM	8 Kg/cm ² NLT	1.1 mm	1.2 mm	Undyed

Note : Any custom shapes and sizes available upon request.

Technical Specification of Mesh Type: 9 Heavy

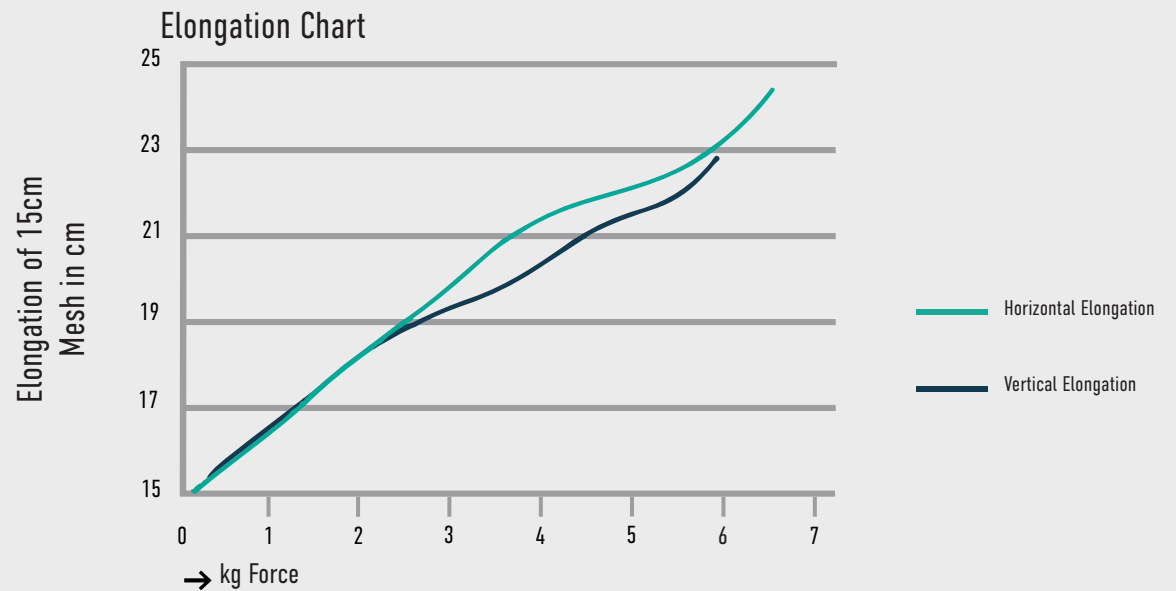
Product	: Monofilament Polypropylene
Type	: 9 Heavy
Cutting Type	: LASER
Sterilization Type	: Ethylene Oxide (EO)
Sterility	: Sterile / Non Sterile
Colour	: Clear - Undyed

Knitting Structures



PICTURE NOT TO SCALE

Specification	: Actual	Tolerance
Filament Diameter	: 0.150mm	+/- 10%
Thickness	: 0.55mm	+/- 10%
Weight	: 90 GSM	+/- 10%
Burst Strength	: Not less than	9.5 kg/cm ²
Pore Size		
Horizontal	: 1.00mm	+/- 10%
Vertical	: 1.50mm	+/- 10%



Heavy 9

CODE	TYPE CODE	TYPE	LENGTH	WIDTH	FILAMENT DIA	THICKNESS mm	WEIGHT	BURST STRENGTH	PORE SIZE "H"	PORE SIZE "V"	COLOR
L9HE6X11U90R	Rectangle	Heavy	11 cm	6 cm	0.15 mm	0.55 mm	90 GSM	9.5 Kg/cm ² NLT	1.1 mm	1.5 mm	Undyed
L9HE6X11B90R	Rectangle	Heavy	11 cm	6 cm	0.15 mm	0.55 mm	90 GSM	9.5 Kg/cm ² NLT	1.1 mm	1.5 mm	Undyed with Blue Stripes
L9HE7.6X15U90R	Rectangle	Heavy	15 cm	7.6 cm	0.15 mm	0.55 mm	90 GSM	9.5 Kg/cm ² NLT	1.1 mm	1.5 mm	Undyed
L9HE7.6X11U90R	Rectangle	Heavy	11 cm	7.6 cm	0.15 mm	0.55 mm	90 GSM	9.5 Kg/cm ² NLT	1.1 mm	1.5 mm	Undyed
L9HE7.6X15B90R	Rectangle	Heavy	15 cm	7.6 cm	0.15 mm	0.55 mm	90 GSM	9.5 Kg/cm ² NLT	1.1 mm	1.5 mm	Undyed with Blue Stripes
L9HE10X15U90R	Rectangle	Heavy	15 cm	10 cm	0.15 mm	0.55 mm	90 GSM	9.5 Kg/cm ² NLT	1.1 mm	1.5 mm	Undyed
L9HE10X15B90R	Rectangle	Heavy	15 cm	10 cm	0.15 mm	0.55 mm	90 GSM	9.5 Kg/cm ² NLT	1.1 mm	1.5 mm	Undyed with Blue Stripes
L9HE10X10U90S	Square	Heavy	10 cm	10 cm	0.15 mm	0.55 mm	90 GSM	9.5 Kg/cm ² NLT	1.1 mm	1.5 mm	Undyed
L9HE10X10B90S	Square	Heavy	10 cm	10 cm	0.15 mm	0.55 mm	90 GSM	9.5 Kg/cm ² NLT	1.1 mm	1.5 mm	Undyed with Blue Stripes
L9HE15X15U90S	Square	Heavy	15 cm	15 cm	0.15 mm	0.55 mm	90 GSM	9.5 Kg/cm ² NLT	1.1 mm	1.5 mm	Undyed

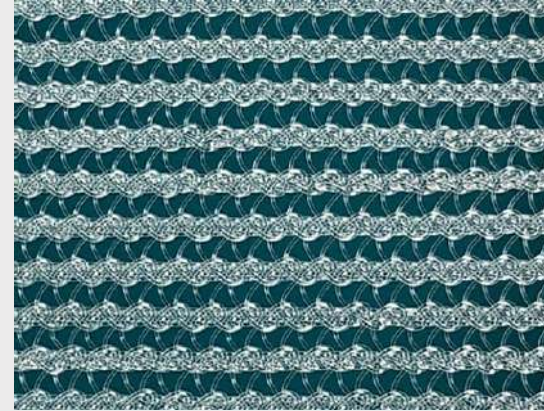
Heavy 9											
CODE	TYPE CODE	TYPE	LENGTH	WIDTH	FILAMENT DIA	THICKNESS mm	WEIGHT	BURST STRENGTH	PORE SIZE "H"	PORE SIZE "V"	COLOR
L9HE15X15B90S	Square	Heavy	15 cm	15 cm	0.15 mm	0.55 mm	90 GSM	9.5 Kg/cm ² NLT	1.1 mm	1.5 mm	Undyed with Blue Stripes
L9HE20X20U90S	Square	Heavy	20 cm	20 cm	0.15 mm	0.55 mm	90 GSM	9.5 Kg/cm ² NLT	1.1 mm	1.5 mm	Undyed
L9HE25X25U90S	Square	Heavy	25 cm	25 cm	0.15 mm	0.55 mm	90 GSM	9.5 Kg/cm ² NLT	1.1 mm	1.5 mm	Undyed
L9HE30X30U90S	Square	Heavy	30 cm	30 cm	0.15 mm	0.55 mm	90 GSM	9.5 Kg/cm ² NLT	1.1 mm	1.5 mm	Undyed
L9HE30X30B90S	Square	Heavy	30 cm	30 cm	0.15 mm	0.55 mm	90 GSM	9.5 Kg/cm ² NLT	1.1 mm	1.5 mm	Undyed with Blue Stripes

Note: Any custom shapes and sizes available upon request.



Technical Specification of Mesh Type: Super Heavy 10

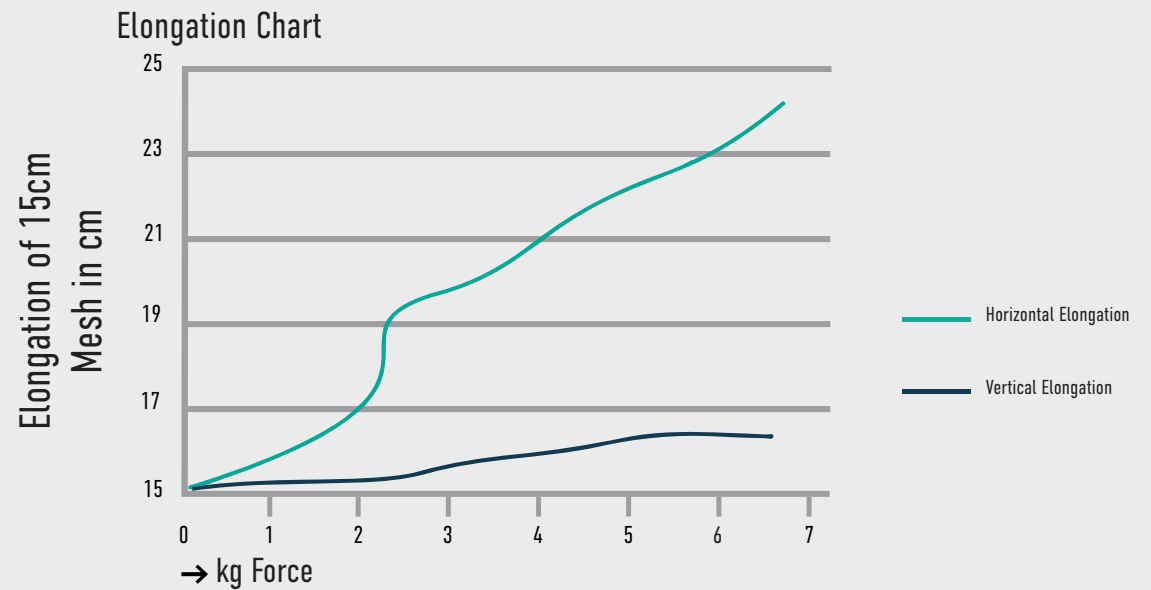
Knitting Structures



PICTURE NOT TO SCALE

Product	: Monofilament Polypropylene
Type	: 10 Super Heavy
Cutting Type	: LASER
Sterilization Type	: Ethylene Oxide (EO)
Sterility	: Sterile / Non Sterile
Colour	: Clear - Undyed

Specification	: Actual	Tolerance
Filament Diameter	: 0.150mm	+/- 10%
Thickness	: 0.150mm	+/- 10%
Weight	: 120 GSM	+/- 10%
Burst Strength	: Not less than	10 kg/cm ²
Pore Size		
Horizontal	: 1.00mm	+/- 10%
Vertical	: 0.75mm	+/- 10%



Super Heavy 10

CODE	TYPE CODE	TYPE	LENGTH	WIDTH	FILAMENT DIA	THICKNESS mm	WEIGHT	BURST STRENGTH	PORE SIZE "H"	PORE SIZE "V"	COLOR
L10HE6X11U120R	Rectangle	Heavy	11 cm	6 cm	0.15 mm	0.65 mm	120 GSM	10 Kg/cm ² NLT	1.1 mm	0.75 mm	Undyed
L10HE7.6X15U120R	Rectangle	Heavy	15 cm	7.6 cm	0.15 mm	0.65 mm	120 GSM	10 Kg/cm ² NLT	1.1 mm	0.75 mm	Undyed
L10HE7.6X11U120R	Rectangle	Heavy	11 cm	7.6 cm	0.15 mm	0.65 mm	120 GSM	10 Kg/cm ² NLT	1.1 mm	0.75 mm	Undyed
L10HE10X15U120R	Rectangle	Heavy	15 cm	10 cm	0.15 mm	0.65 mm	120 GSM	10 Kg/cm ² NLT	1.1 mm	0.75 mm	Undyed
L10HE10X10U120S	Square	Heavy	10 cm	10 cm	0.15 mm	0.65 mm	120 GSM	10 Kg/cm ² NLT	1.1 mm	0.75 mm	Undyed
L10HE15X15U120S	Square	Heavy	15 cm	15 cm	0.15 mm	0.65 mm	120 GSM	10 Kg/cm ² NLT	1.1 mm	0.75 mm	Undyed
L10HE20X20U120S	Square	Heavy	20 cm	20 cm	0.15 mm	0.65 mm	120 GSM	10 Kg/cm ² NLT	1.1 mm	0.75 mm	Undyed
L10HE25X25U120S	Square	Heavy	25 cm	25 cm	0.15 mm	0.65 mm	120 GSM	10 Kg/cm ² NLT	1.1 mm	0.75 mm	Undyed
L10HE30X30U120S	Square	Heavy	30 cm	30 cm	0.15 mm	0.65 mm	120 GSM	10 Kg/cm ² NLT	1.1 mm	0.75 mm	Undyed

Note: Any custom shapes and sizes available upon request.

